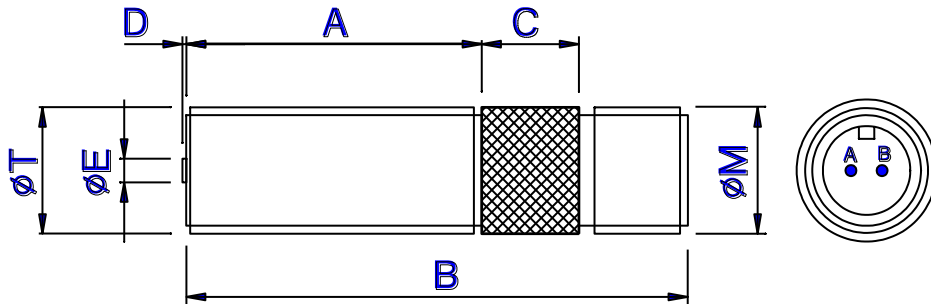


PCL-10100

Plug & Socket Type Magnetic Pick-up

Do Not Scale



Mechanical specification

dimensions in mm unless otherwise stated

<i>dimension</i>		<i>part number</i>
A	63	
B	89	
C	12 medium diamond knurl	
D	0.6 nominal	
ØE	Ø2.8 Pole Piece	
ØM	5/8" x 24 tpi UNEF-2A (connector thread)	
ØT	5/8" x 18 tpi UNF-2A (body thread)	PCL-10100
<i>or</i>	M16 x 1.5 6g	PCL-11100
Main body matl	Stainless Steel	
End Bobbin face	Polypropylene	
Locknut	1 off supplied as standard	

Electrical specification

Resistance	250 ohms nominal
Inductance	60mH nominal
Operating temperature range	-20°C to + 120°C
Voltage output	25V peak-peak <small>see note 1</small>
Minimum speed	22mm/second <small>see note 2</small>
Termination	MS (screw) 10SL4P (2-pin integral plug)
Mating connector <small>see note 3</small>	MS (screw) 10SL4S (2-pin line socket)

Notes:

1. Nominal output is a typical peak to peak voltage measured across a 10K load using a 60 tooth mild steel gear wheel of Ø6", rotating at 1000 rpm and with an air gap setting of 0.01".
2. Minimum speed in mm/second to generate 100mV peak to peak typical output under standard test conditions as in note 1.
3. Mating line connectors (straight or 90°, complete with cable bush & clamp) are available to order separately.